

How to Easily Find Errors in Models in Excel Using hēRo3

Version 2.1

July 2020

Check Outcomes & Cost Calculations

BEGIN HERE

Check *discounted* total costs & outcomes in models in Excel & hēRo3.

Are they the same?

Y

You're done!

N

Check *undiscounted* total costs & outcomes in the two models.

Are they the same?

Y

Go to CHECK DISCOUNTING CALCS

N

Check outcomes & cost line items

Is discrepancy limited to a *single* line-item value?

N

OK—let's deploy hēRo3's Export to Excel feature

Y

Go to CHECK VALUES CALCULATIONS

Now, open XLSX file that hēRo3 generates & check entries in sheet, "Results -Trace (Corrected)", against trace calculations *with* half-cycle correction in Excel model

Are results identical?

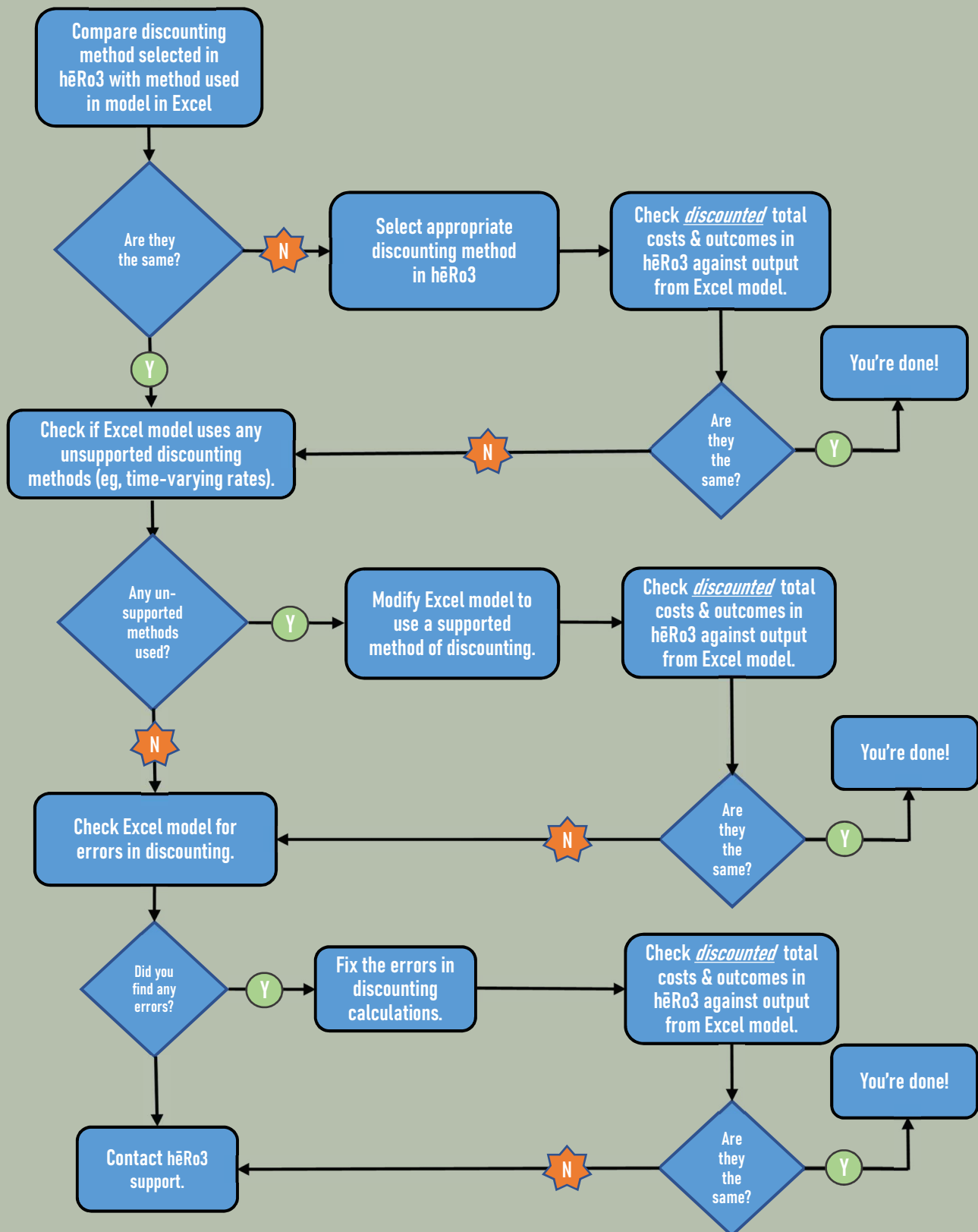
Y

N

Go to CHECK TRACE CALCULATIONS

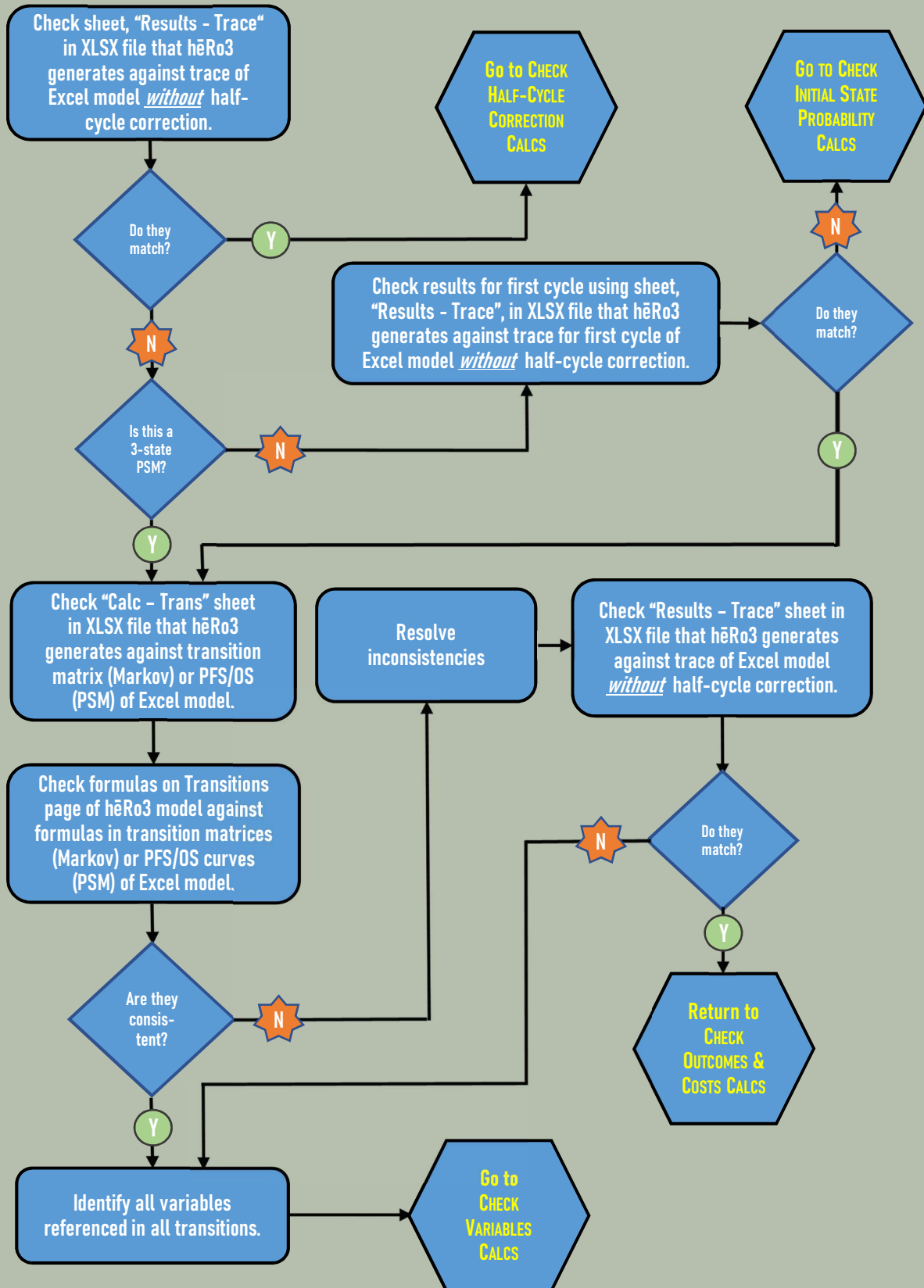
Check Discounting Calculations

START

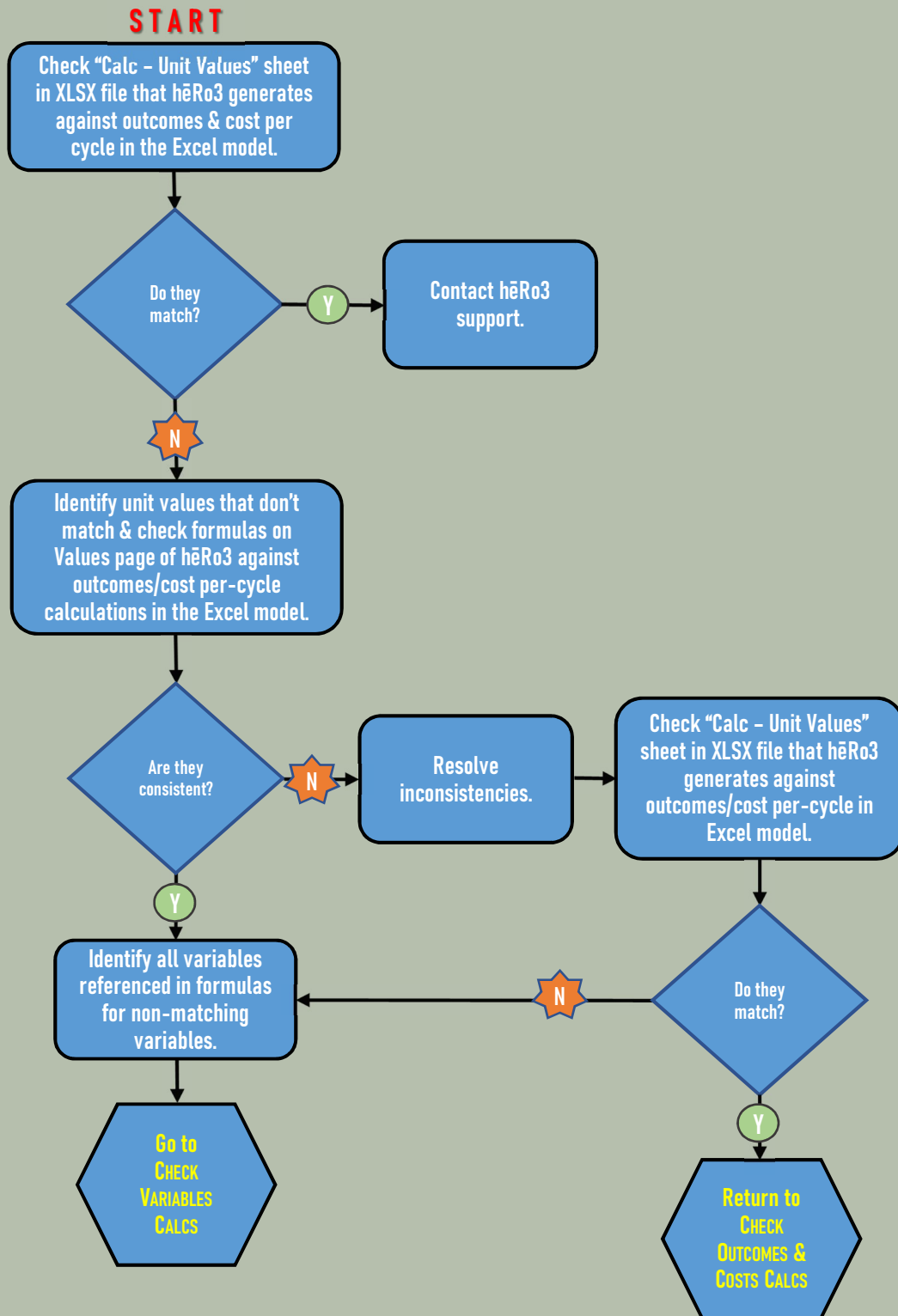


Check Trace Calculations

START

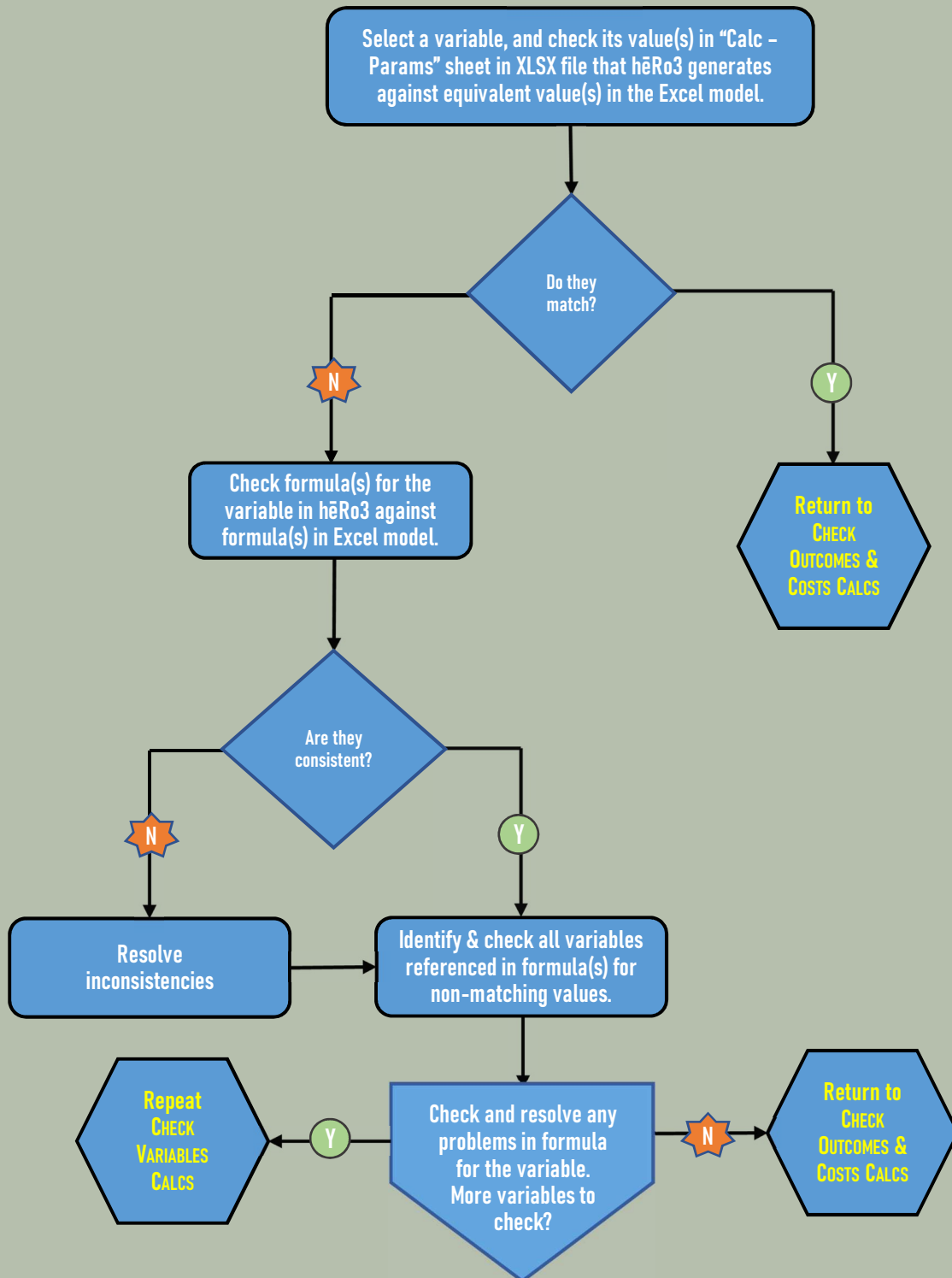


Check Values Calculations



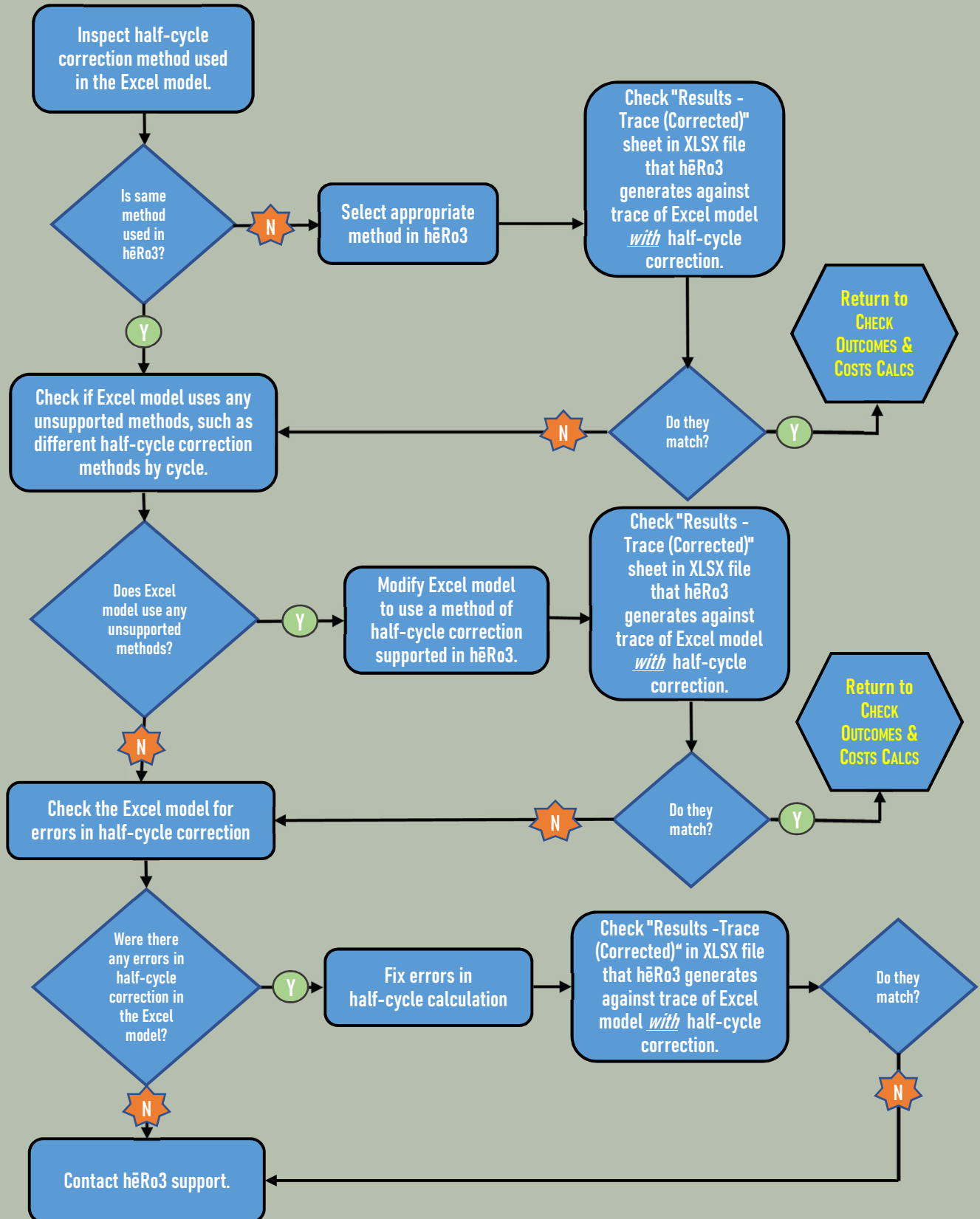
Check Variables Calculations

START



Check Half-Cycle Correction Calculations

START



Check Initial State Probability Calculations

